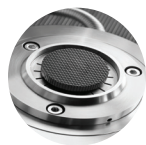
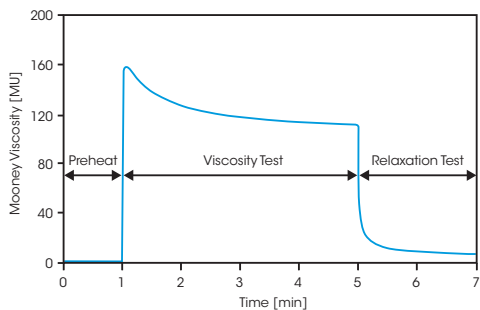




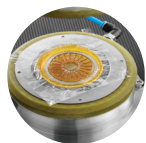
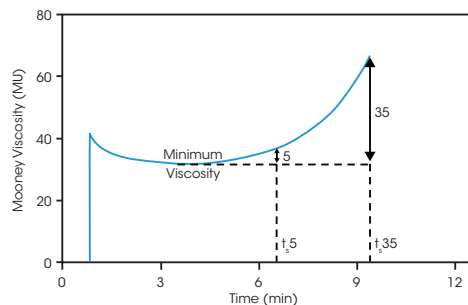
## MOONEY | Mooney Viscosity

ASTM D1646, ISO 289, DIN 53525



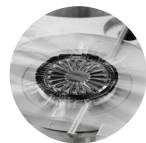
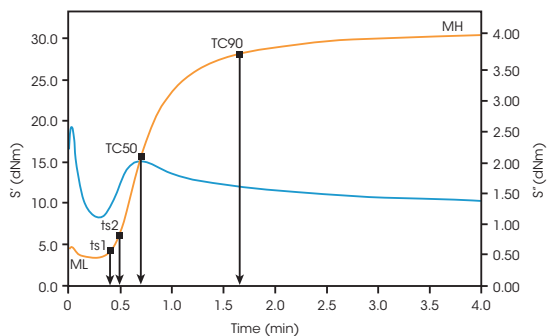
## MOONEY | Mooney Scorch

ASTM D1646, ISO 289, DIN 53525



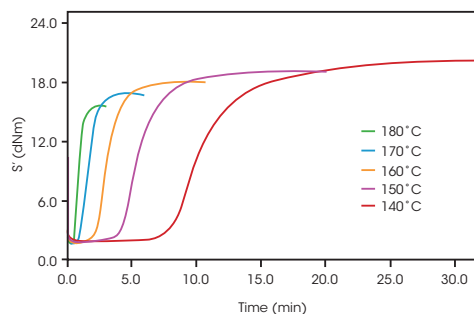
## MDR | Isothermal Cure

ASTM D5289, ISO 6502, DIN 53529



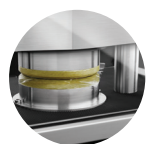
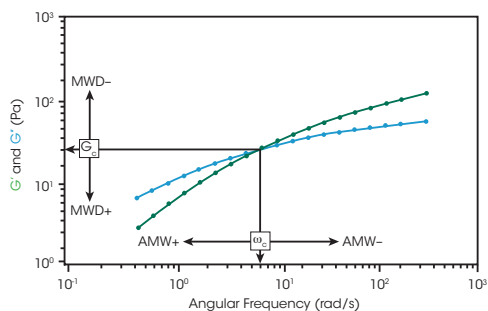
## MDR | Cure Kinetics

ASTM D5289, ISO 6502, DIN 53529



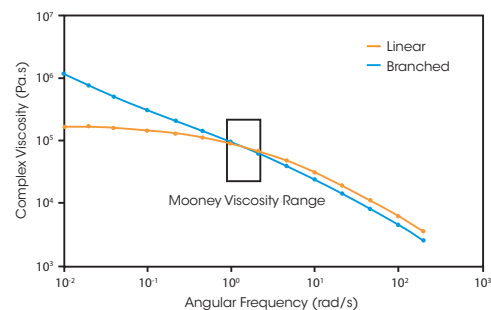
## RPA | Isothermal Frequency Sweep

ASTM D6204, D7605; ISO 6502, 13145; DIN 53529

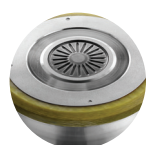
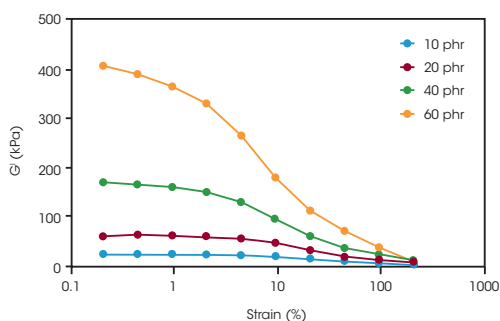


## RPA | Flow Behavior of Compounds

ASTM D6204, D7605; ISO 6502, 13145; DIN 53529



## RPA | Strain Sweep for filler loading [Payne Effect]



## RPA | High Strain Non-Linear Behavior [LAOS]

