



# *TA Instruments*

## *Packing the Q50/Q500*

---

This procedure covers the steps for properly packing up the Q50/Q500 TGA for shipment.

### Packing Materials Provided

Standard Furnace	EGA Furnace
2 foam inserts	2 foam inserts
3" furnace shipping support	2" furnace shipping support
	EGA shipping bracket

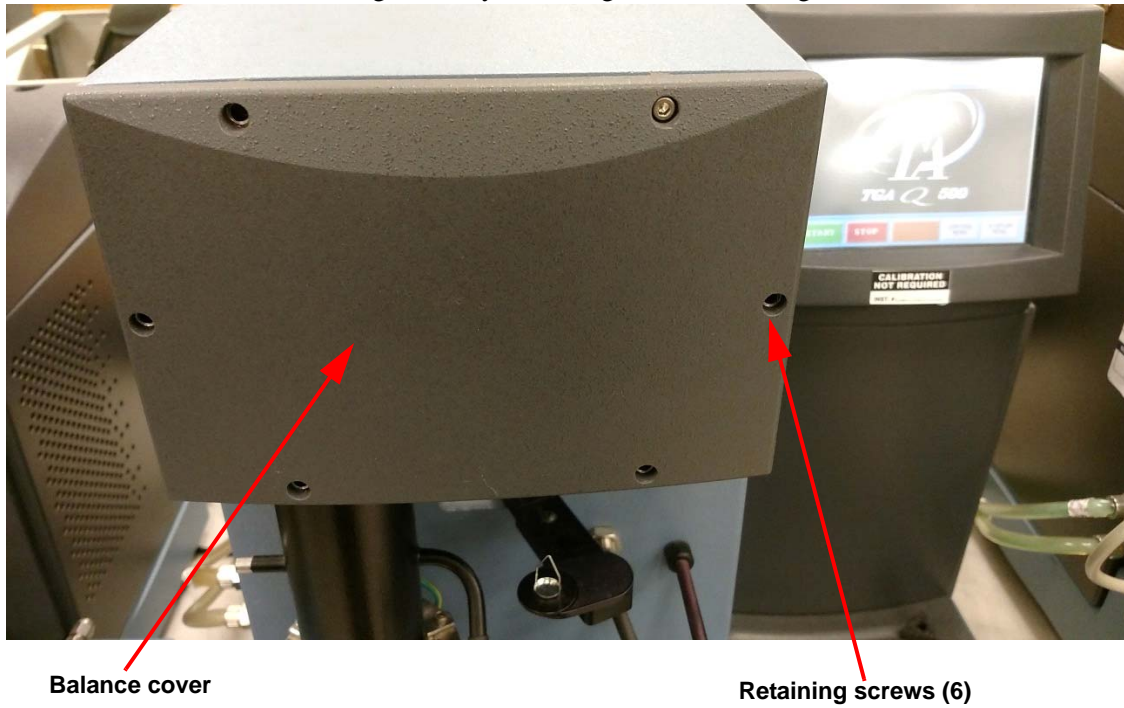
### Tools Required

- 7/64" Allen key
- 3/8" wrench
- 1/2" wrench
- Heavy-duty tape
- Strapping kit

### *Packing Procedure*

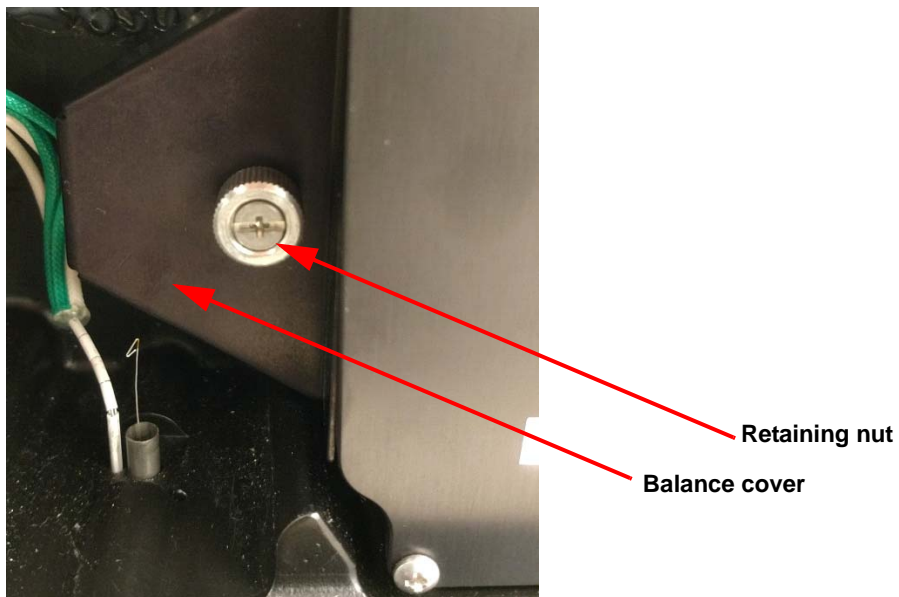
**NOTE:** Before starting this procedure, remove all hangdown wires, pans, water and gas lines from the instrument.

**1** Remove the balance housing cover by removing the six retaining screws.



**Figure 1**

**2** Remove the balance side covers.



**Figure 2**

3 Install the foam shipping inserts.

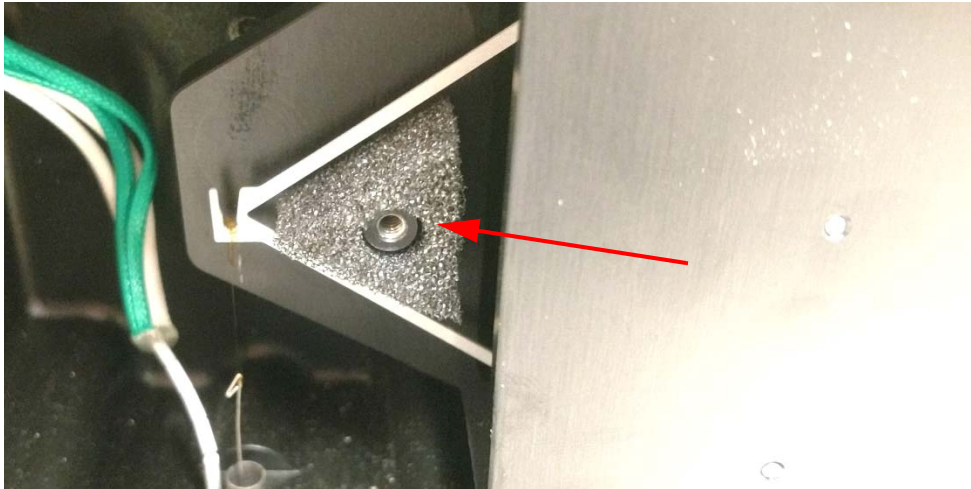


Figure 3 Shipping foam.

4 Re-install the balance side covers. Re-install the balance housing cover.

5 Raise the furnace.

a For Q50: Press the furnace button on the front of the instrument.

b For Q500: Press the **Control Menu** button on the LCD screen. Then press the **Furnace** button.

6 Install the furnace shipping support. Using a 3/8" wrench, tighten the foot under the furnace. Next, use a 1/2" wrench to tighten the locknut in place.

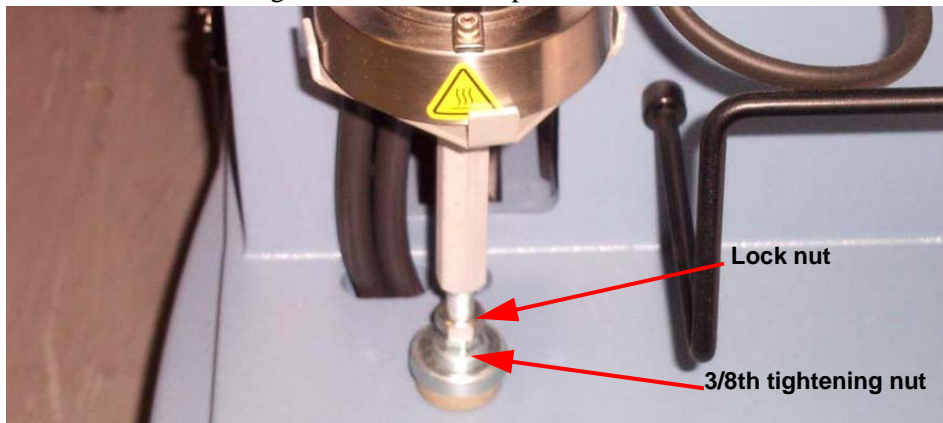


Figure 4

7 If the TGA has an EGA furnace installed, see Figure 5 for the shipping bracket installation.



Figure 5

- 8 Disconnect all cords, cables, and tubing to the instrument.
- 9 Shutdown the instrument.
  - a **For Q50:** From the instrument control on the computer, click on the **Control** drop-down menu and select **Instrument Shutdown**. Follow the prompts.
  - b **For Q500:** Press the **Display Menu** button on the LCD screen. Press the **Shutdown** button. Follow the prompts.
- 10 If shipping the instrument in the reusable TA plastic shipping container:
  - a Place instrument in shipping container.
  - b Place top portion of shipping container over the instrument. Note the direction, the “FRONT” is labeled on both the top and bottom portions of the container. Secure the latches on all of the sides.
  - c Your instrument is now ready to ship.
- 11 If shipping a Q50/Q500 in the cardboard shipping carton:
  - a Carefully lift the instrument and remove the feet.
  - b Place the instrument on the plastic pallet.
  - c Secure instrument to pallet with 4 shipping bolts.
  - d Place feet and accessories into accessory box and place box next to instrument on pallet.
  - e Place outside carton over pallet and seal with heavy-duty tape.
  - f Using a strapping kit, secure outside carton to the plastic pallet.
  - g Your instrument is now ready to ship.

**TA Instruments strongly recommends using a Motor Freight Carrier!**